



**PAUL DAVIS**  
Restoration & Remodeling

*Disaster Restoration, Fire*



[www.pdwisconsin.com](http://www.pdwisconsin.com)

414.383.3131 • 920.967.0087

# *In Our Words*

## CASE STUDY

To Whom It May Concern:

Our family experienced a devastating house fire in September. We immediately hired Paul Davis Restoration & Remodeling, whom we knew we could trust to rebuild our home and restore as many items as possible.

From the beginning we were greeted by very caring individuals. From the process of inventory to cleaning the finished product, everyone was professional and very polite.

Being displaced from our home, we were very impressed with our contractor's ability to keep us on schedule. Once a timeline was established, it was kept with diligence. We were back in our home in the six months promised. We did make some cosmetic changes and they exceeded our expectations! The painting, carpentry, bathroom and kitchen designs were phenomenal. Our home is better than it was before the disaster.

Our team from Paul Davis took time in making sure our questions were answered. We are so happy with the way our home turned out. It holds not a single hint of a smoke smell. We are grateful that some special pieces and our family pictures were able to be restored.

We are so happy with the outcome of our house. Everyone treated us with such dignity and respect; we could not ask for a better ending!

Sincerely,

Dennis, Michelle, Allie, and Kaitlin W.



# BEFORE



## Great Room

**The Event:** A highly destructive fire significantly damaging this three-story home with flames, smoke, soot and water. The fire started from lightning which struck a gas line traveling until it reached the great room floor joists, pictured here. The family was not home during the time of the fire, resulting in a delay for emergency personnel to arrive on scene ultimately increasing the severity and degree of damage.



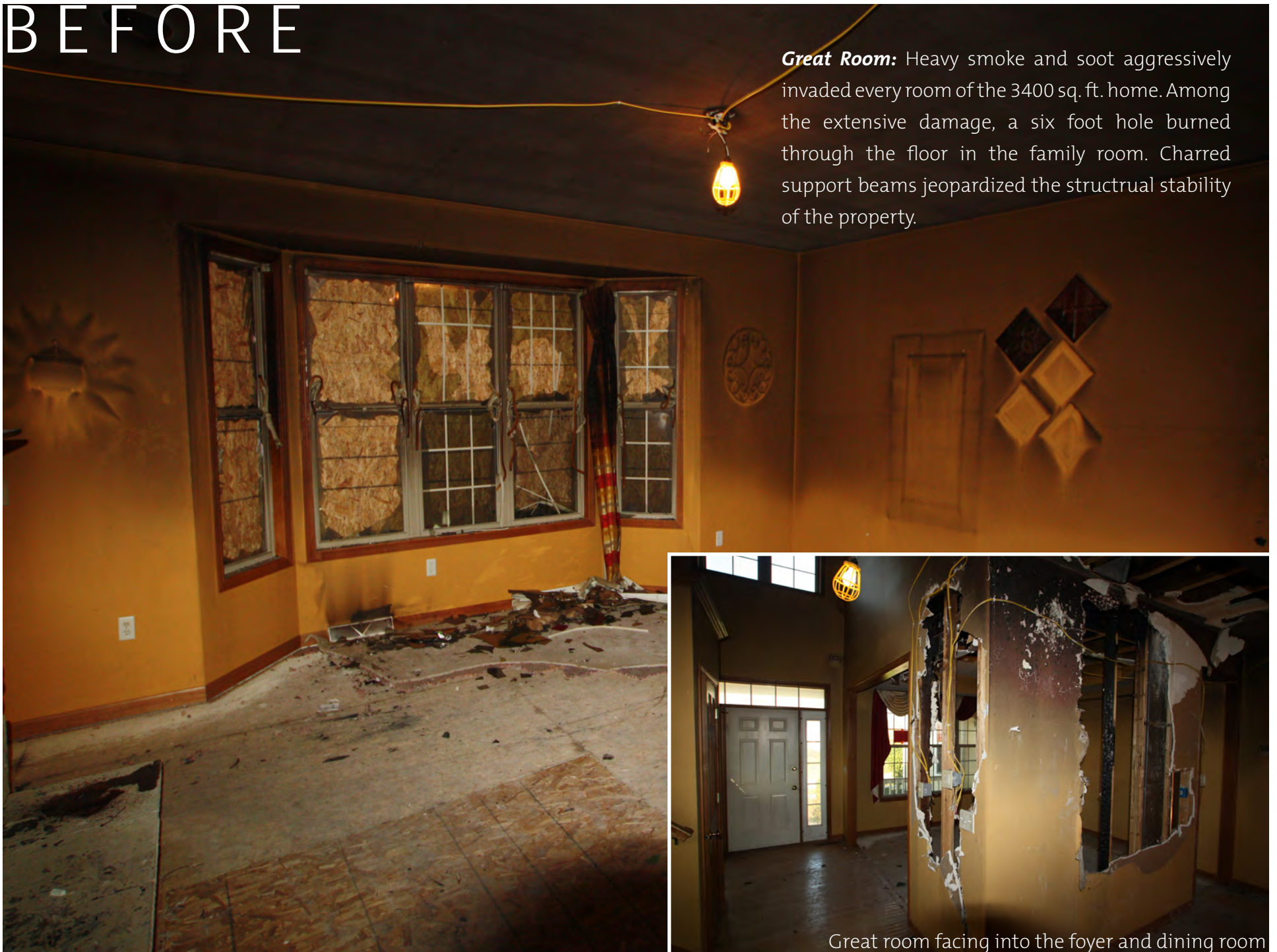
# AFTER





# BEFORE

**Great Room:** Heavy smoke and soot aggressively invaded every room of the 3400 sq. ft. home. Among the extensive damage, a six foot hole burned through the floor in the family room. Charred support beams jeopardized the structural stability of the property.



Great room facing into the foyer and dining room



# AFTER

After extensive restoration the great room is once again a welcoming gathering place. The floor joists were replaced, charred framing removed and decorative elements refinished. Stone on the two-sided fireplace shared with the kitchen was restored. A cherished portrait on the mantle was recommissioned from photo negatives and prominently adorns the mantle as it did before the fire.





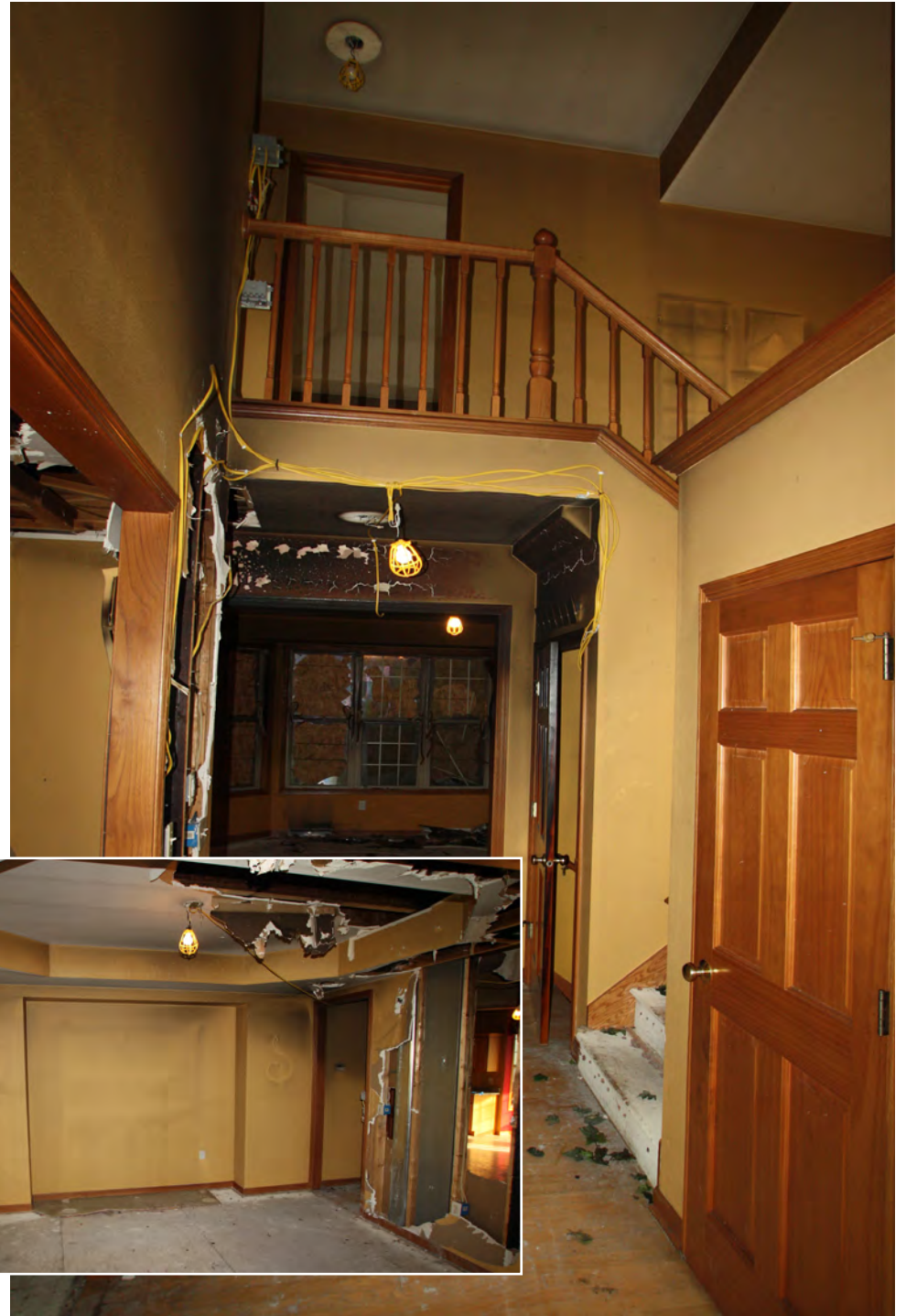
# BEFORE



## Foyer and Formal Dining

**Challenge:** Heavy soot, smoke and structural fire damage occurred in the foyer and formal dining room directly adjacent to the fire origin in the great room.

**Restoration:** The entire house was taken down to exposed framing members. From there, we introduced a regiment of deodorization techniques including thermal-fogging. After that technique was completed, a liberal coat of white pigmented shellac was applied to all surfaces of the home including exposed framing to guarantee odor remediation. All decorative building materials were replaced from molding to light fixtures.



# AFTER



**Result:** Vibrance, class and sophistication.

The formal dining room was restored from the tray ceiling to the hardwood floors. The owners were delighted when their original hardwood dining set and hutch were saved as they held great sentimental value to the family. New paint colors were selected and the room was finished with an artistic light fixture and accessories.

Bullnose corners were incorporated throughout the home at the request of the homeowner.





# BEFORE



## Kitchen

### **Opportunities:**

Expand the small island.

Add a pantry for more storage.

Install an electronics charging station.

Upgrade light fixtures and hardware.





AFTER





# AFTER



**Opportunity:** The homeowner wanted to maximize space when it came to restoring the kitchen. A pantry was added, to the right of the island, borrowing space from the under-utilized closet. This allowed for a highly organized storage system.



**Opportunity:** A busy household with two teenagers and many friends always left the refrigerator low on refreshments. A beverage center was added to the new expansive eight-foot island. The french door Silhouette Danby model meets the needs of teenagers and adults; two french doors offer options for both soft drinks and wine.



**Opportunity:** Birch Koch cabinets with a Vicksburg door style in a golden stain were introduced. Compartments for the stereo and cell phone charging station were installed to discretely hide cords. Solid maple flooring accents the plantation shutters in the breakfast nook.





**The Process:** The smoke odor was eliminated and the master suite was restored to pre-loss condition. Paint was carried into the tray ceiling to highlight the architectural detail and the homeowners furniture was restored and accessorized to provide a modern yet tranquil retreat.



## Master Suite



# AFTER



# BEFORE



Master Bath

***The Opportunity:*** An infrequently used soaking tub collected laundry and finishes had an opportunity to be refreshed. Eliminating the tub allowed the water closet wall, which also houses the shower, to be bumped out one foot. This improvement makes a dramatic difference and redefines formerly unused space.

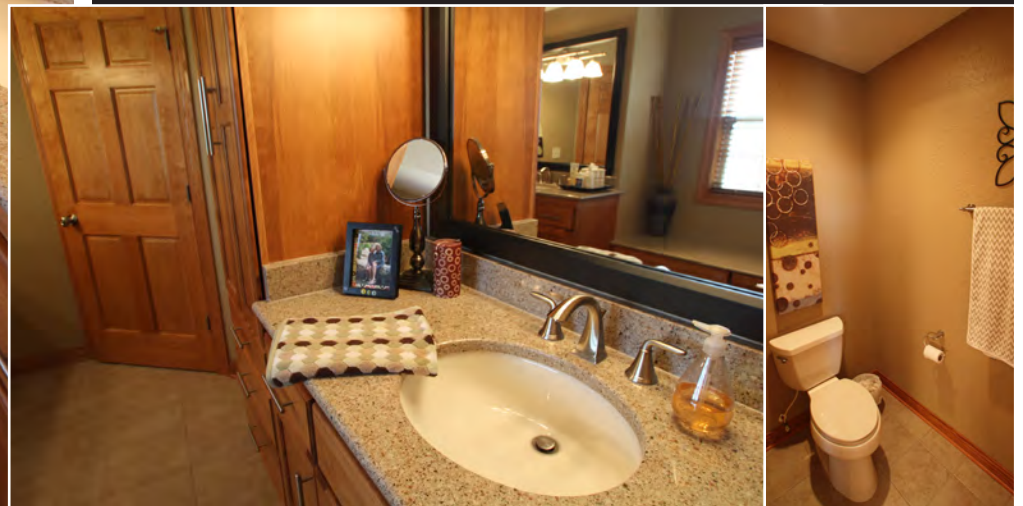




# AFTER



**The Result:** Maple cabinets were carried throughout the bath and offer a custom furniture quality. A dressing bench replaces the tub providing storage options and allows more space for the frameless tile shower located in the water closet. Framed mirrors set with modern light fixtures and granite solid surface vanity tops complete the designer look.





# Bedrooms



**The Damage:** The guest bedroom, directly above the great room, suffered extensive heat and structure damage. Down the hall, the kids bedrooms and bathroom experienced heavy smoke and soot damage.



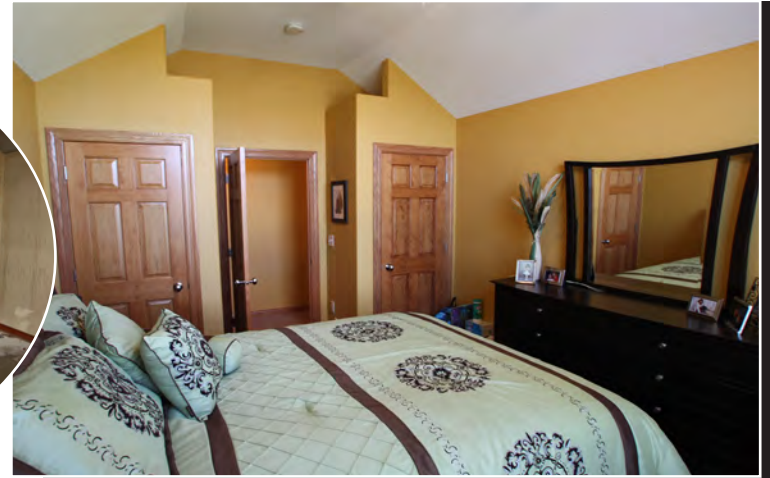
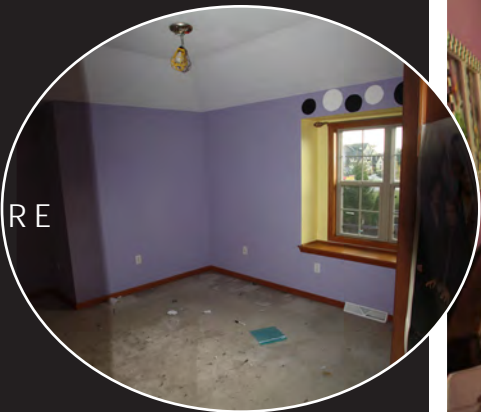
BEFORE



BEFORE



BEFORE







## Family Room

**The Result:** The origin of the fire was located directly above the walkout finished basement. Heavy damage to the ceiling and floor joists required structural attention. Vibrant colors were used and special detail was given to the space making it friendly to the teenagers and adults. An under-utilized closet was removed allowing more space for entertaining and better flow. A special access point was added for the family cat to enter an unfinished room for his own retreat.

BEFORE



AFTER

