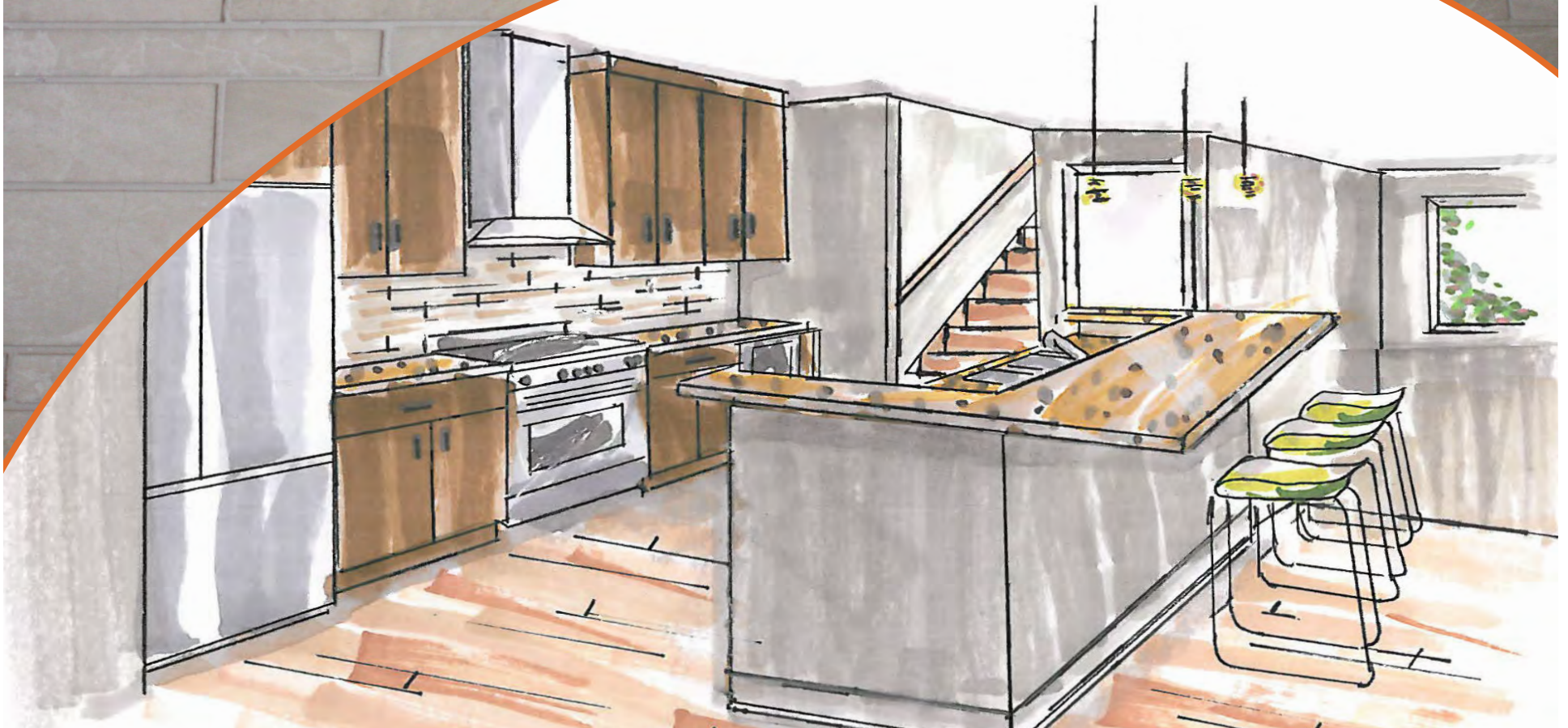


## RESIDENTIAL INTERIOR OVER \$100,000



**Project:** Transform the arctic shell condominium, which lacked HVAC, lighting, plumbing, ceilings, electricity and interior walls to a contemporary living space. Following the homeowner's vision, a modern oasis was created through custom finishes and material selections resulting in high style city living.

**WYNVEEN RESIDENCE  
MILWAUKEE, WI**

To: NARI Judges

Re: Interior Remodel Over \$100,000

I hope this letter of recommendation will convey how pleased I am with the work my general contractor did in creating my dream home. The unfinished home I purchased is a modern condo in a totally unique, green development on the east side of Milwaukee.

I must admit, the thought of purchasing a completely unfinished, grey box home was quite daunting at first, but after discussing the build-out with my general contractor, I had total confidence that his company would be able to finish my home exactly as I envisioned, and that it could be done in a timely fashion.

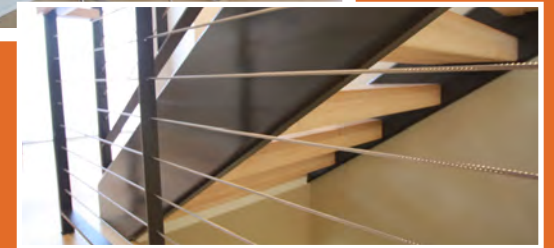
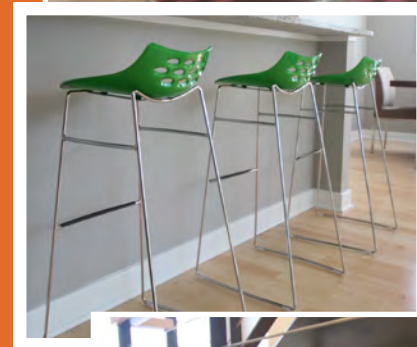
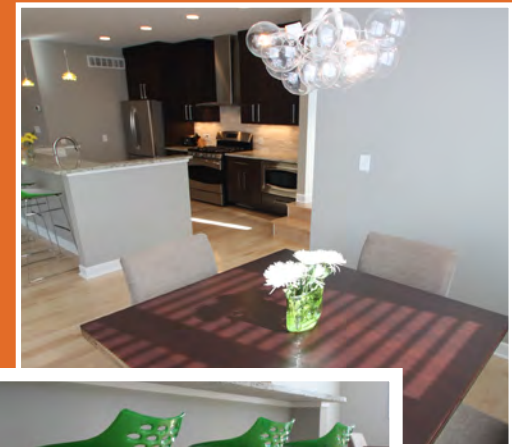
At the beginning of the project, I met with the company's designers and we discussed my vision of a contemporary home with clean lines and modern finishes. The designers provided valuable insight and helped guide my selections to create the look I was after. Watching the transformation of my home from an empty shell into the finished product was amazing and I was able to observe the quality of their workmanship on a daily basis. My project manager and contractor were incredibly attentive and addressed any questions or concerns that I had in a timely fashion. They were respectful of my time and met with me on a weekly basis to discuss the progress of the build-out to make sure we were all on the same page.

The time line was a challenge, and the fact that they were able to complete my entire home in just over four months was also impressive. The whole team was professional and respectful. If I had to do the whole project over again, I would choose this company whole-heartedly. I intend to recommend them to anyone I know who is looking to remodel their home.

Sincerely,  
Chris Wynveen

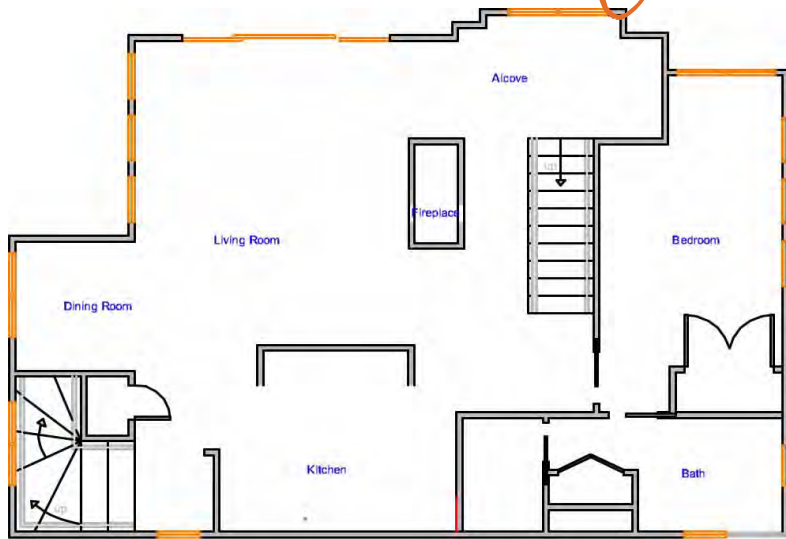
*Thank You*

# TESTIMONIAL

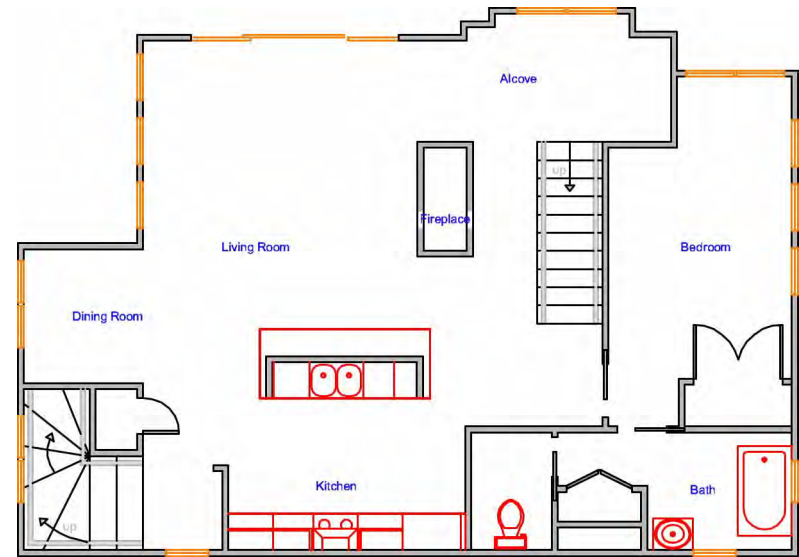




# Layout | Kitchen / Bath defining the space.



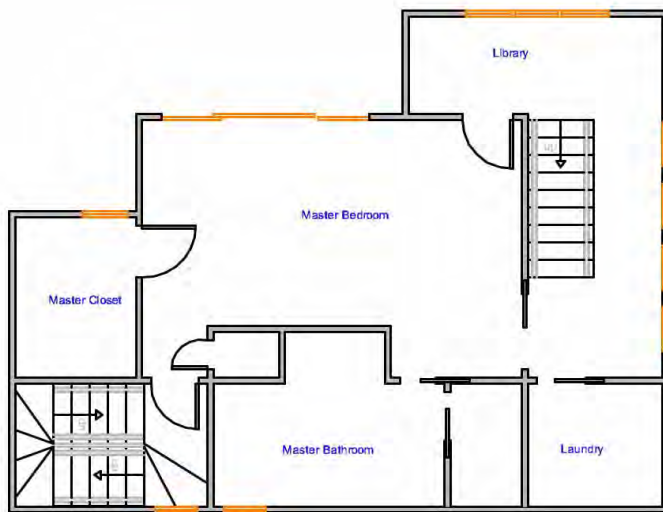
Second Floor, Before



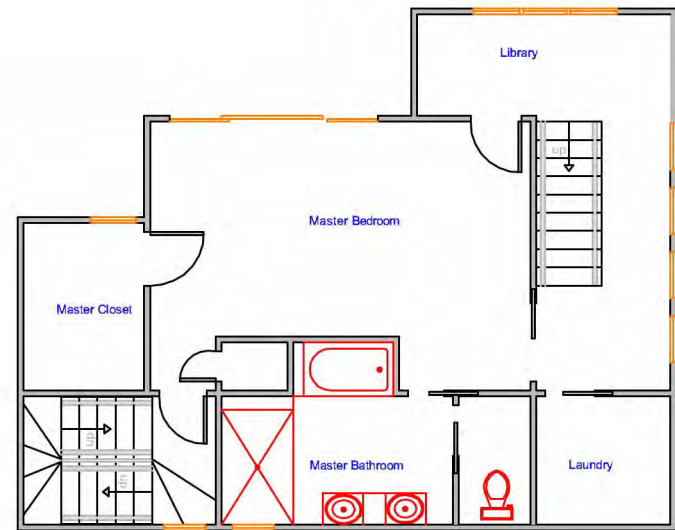
Second Floor, After

Before

After



Third Floor, Before

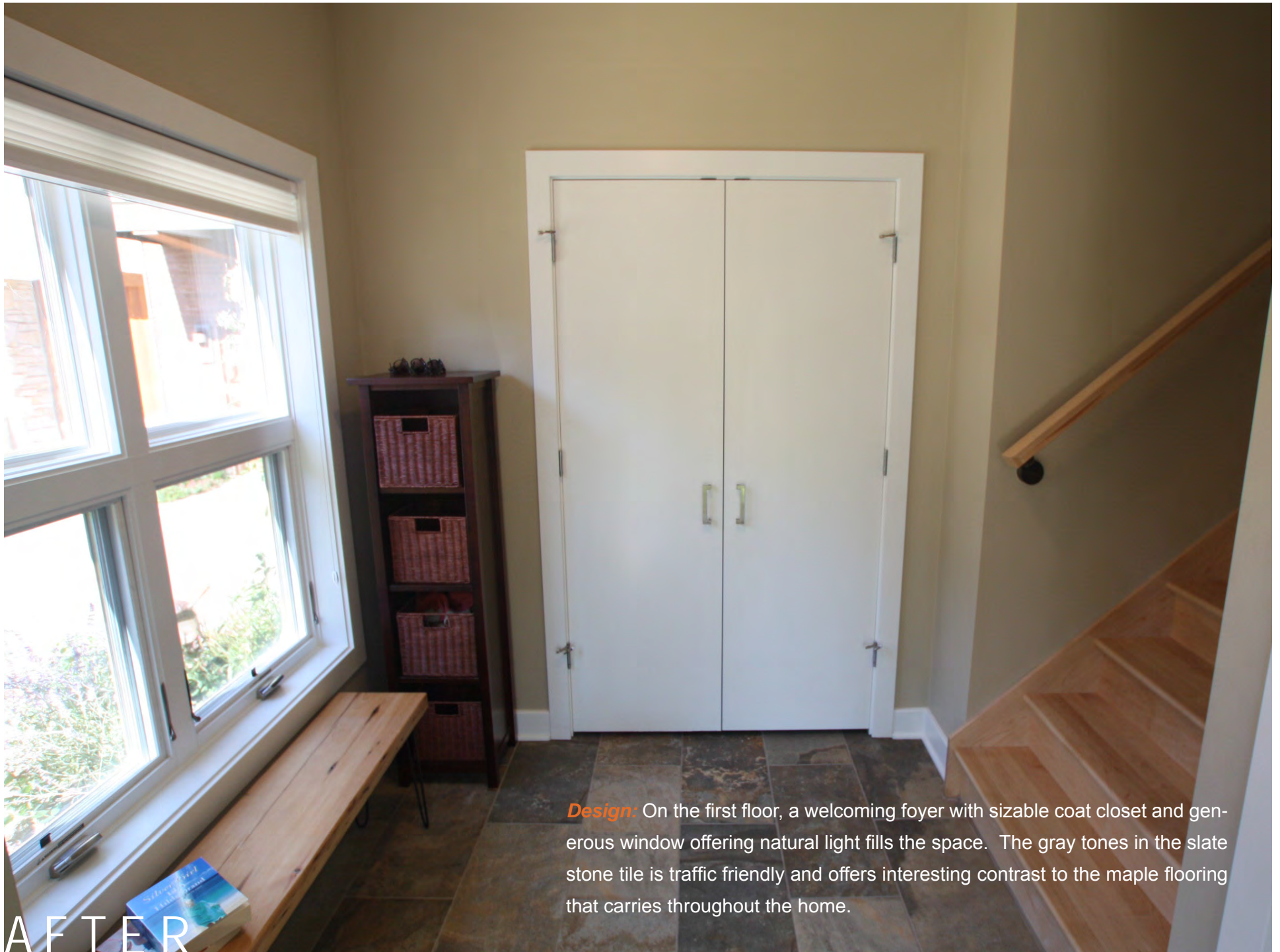


Third Floor, After



BEFORE





**Design:** On the first floor, a welcoming foyer with sizable coat closet and generous window offering natural light fills the space. The gray tones in the slate stone tile is traffic friendly and offers interesting contrast to the maple flooring that carries throughout the home.

AFTER





BEFORE





**Design:** The main living space was designed with an open concept living room and dining nook. Natural light is abundant during the day and strategically placed can lights provide ambiance in the evening. The homeowner describes the space as, “completely functional and perfect for entertaining.”

AFTER





BEFORE



*Design:* Attention to detail was paramount to maintain the simple lines and classically modern elements of the design. Sophisticated materials and fine craftsmanship are paramount. 4" wide Bellwood maple hardwood flooring in a natural finish is complimented by the clean line of the 4 1/2 " solid poplar eased edge baseboard.







**Design:** An ebony maple matte Seville media cabinet offers clean lines and provides ample storage for technology. Yet another unique and eye-catching feature on the main level is the contemporary direct vent gas fireplace with starfire glass crystals. The entertainment unit and fireplace can be enjoyed from both the seating area and open concept kitchen.



AFTER



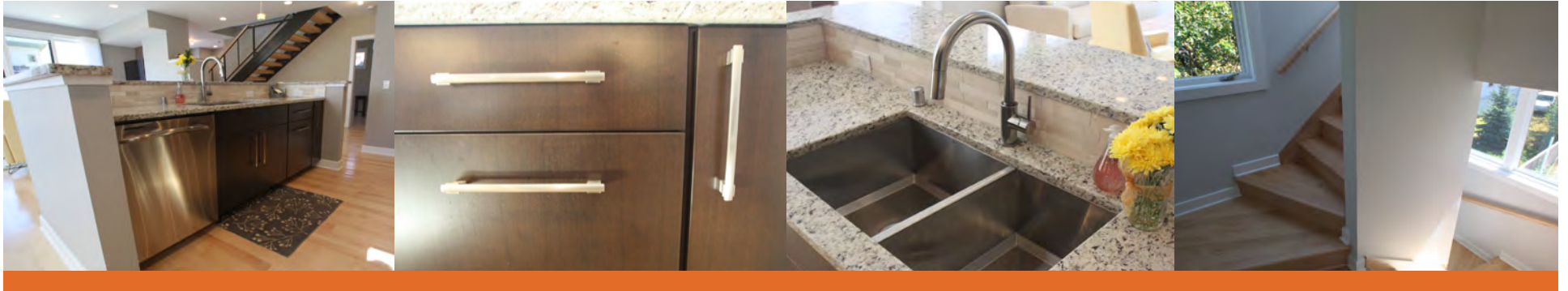


AFTER









**Design:** The kitchen and breakfast bar allow for open concept living with entertaining in mind and is ideal for a weekend chef. The design balances an expansive glass door and wall directly off the living room, which frames beautiful sunsets and garden views from the common areas. Space and storage were maximized with custom cabinetry designed to the owners specifications. A secondary staircase off the kitchen provides convenient access to the master suite on the third level and a rooftop patio on the fourth.

**Materials:** Ebony maple Seville cabinets, Emtex nickel hardware, Ogetty lime pendant lights, Moen kitchen sink, Delta nickel faucet, Botticino polished marble backsplash and Juparana gold eased edge granite.

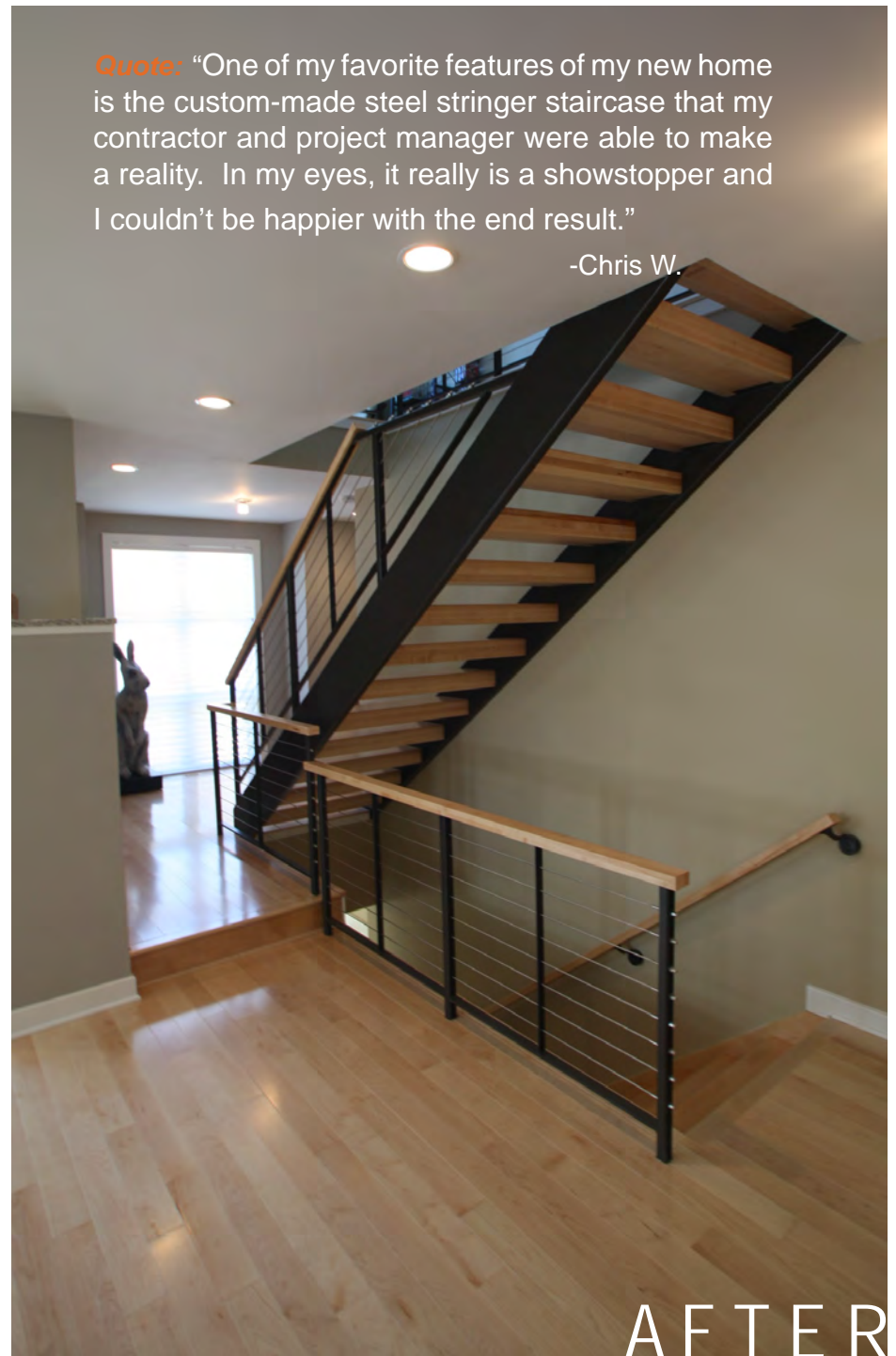
**Appliances:** High grade GE stainless appliances including a built-in microwave with stainless trim, french door refrigerator, dishwasher, range and range hood.







BEFORE



**Quote:** "One of my favorite features of my new home is the custom-made steel stringer staircase that my contractor and project manager were able to make a reality. In my eyes, it really is a showstopper and I couldn't be happier with the end result."

-Chris W.

AFTER





**Design:** The homeowner challenged our team to design a unique staircase that would be artful and modern. A stair rail with cable in-fill spans the second and third floors adding architectural interest to the living room and library. Metal with maple tops compliment the open maple treads.

**Design:** The guest room and bath on the second floor are well appointed. A 12x24 tile tub surround in motion beige is contrasted by the deep ebony vanity, both with Kohler products. Attention to detail is demonstrated through the custom mirror and nickel Delta bath accessories.











**Design:** A third floor library/office opens into the master suite. The Bellwood maple hardwood floors continue throughout this level and lend a continued sense of continuity within the house. Hunter Douglas silhouette window treatments provide ample privacy, yet maximize natural light.







BEFORE



**Design:** The sleek master bathroom serves as a modern retreat. A unique bench crafted from quartz with a concrete polish provides seating in the walk-in shower and is complimented by soul flow grey 12x24 tile. Two custom boxes add interest and storage to the roomy shower. A complimentary quartz counter caps the Seville vanity with Ronbow undermount sinks. Nickel accessories and two custom mirrors finish the space.

AFTER

